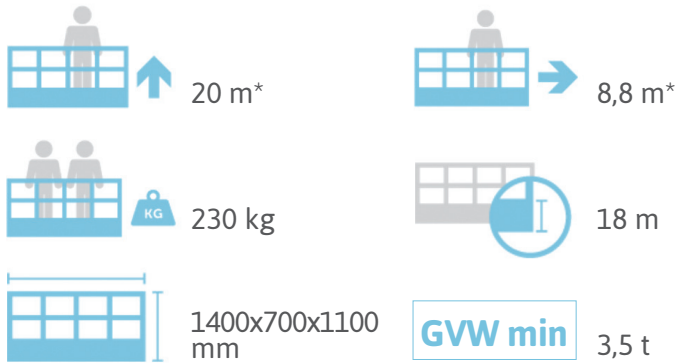




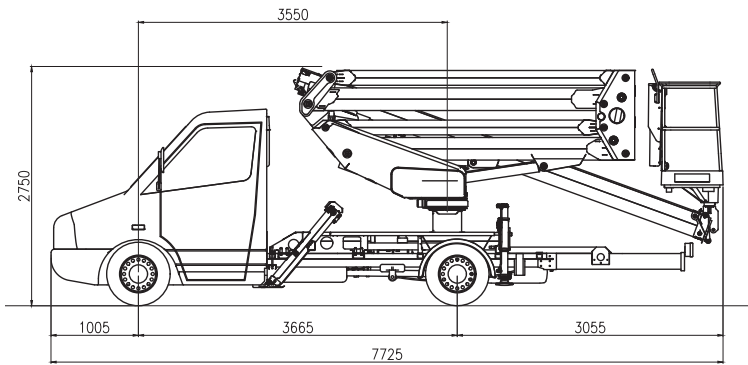
Première
Vertikal
days

CTEZED 20.3 A+H

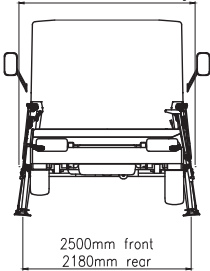
MB Sprinter



DIMENSIONS

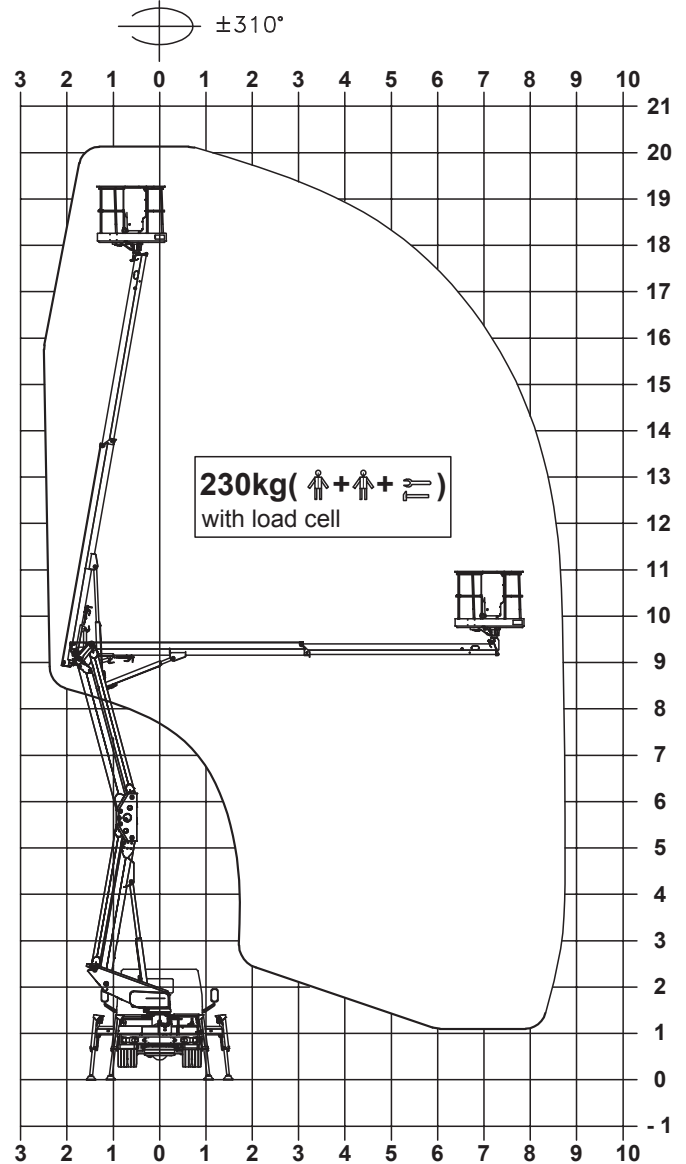


2250mm max width in running order



* outreach and height max values and repeatability can change within $\pm 3\%$ due to manufacturing variation and working condition.

WORKING ENVELOPE



A+H Stab System



UP&OVER



Max Capacity 230 kg



Absolute verticality



CTE S.p.A.
 Headquarter 7 Via Caproni - Rovereto (TN) IT, 38068
 Factory 5 Loc. Terramatta - Rivoli Veronese (VR) IT, 37010
 Warehouse 2 Via E. Fermi - Affi (VR) IT, 37010
 CTE UK Ltd Enderby Leicestershire - UK
 info@ctelift.com - www.ctelift.com